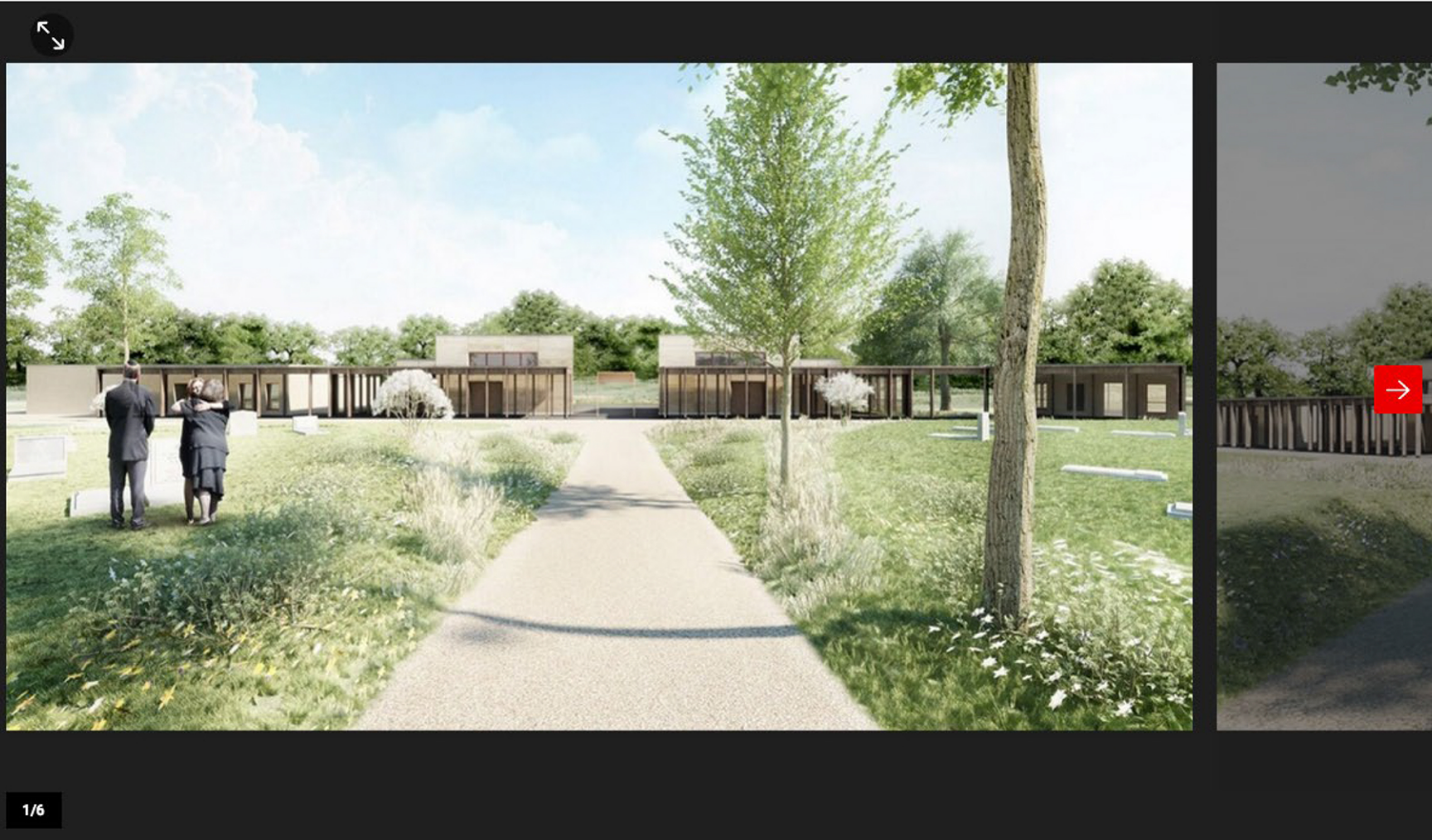


< NEWS

Work starts on Waugh Thistleton's cemetery plans

11 DECEMBER, 2015 • BY RICHARD WAITE



1/6



COMMENT

Construction has begun on this £6.5 million cemetery project designed by Waugh Thistleton in Bushey, Hertfordshire

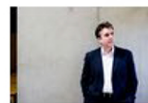
PROJECT DATA

Backed by United Synagogues, the scheme in the greenbelt features a main ceremonial space built from rammed earth and two timber service buildings.

The London-based practice is working on the project, which was approved by Hertsmeire Council in 2013, with landscape architects J and L Gibbons and engineers Elliott Wood.

MOST POPULAR

MOST COMMENTED



Mull suspended as dean of Cass



Parry reveals proposals for tallest tower in City

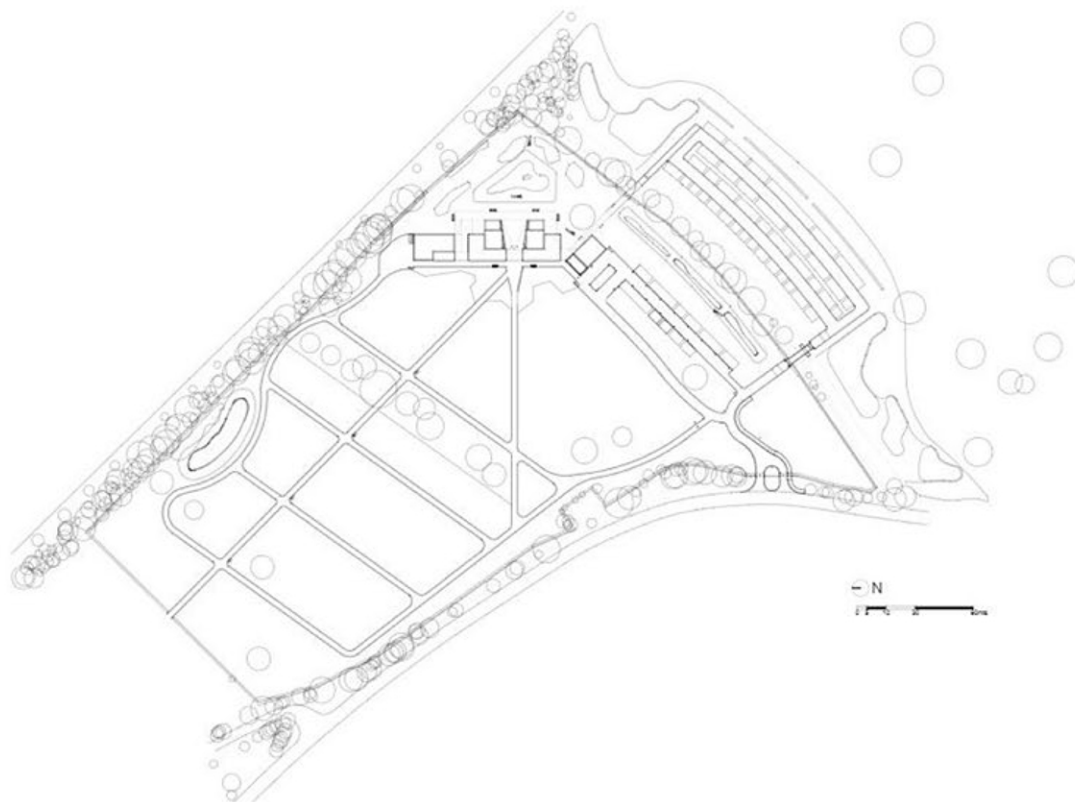


Assemble wins 2015 Turner Prize

Andrew Waugh, director at Waugh Thistleton, said: 'This is a very special building and we believe the rammed earth technique we are using enhances the spiritual nature of the religious building, as the materials are biodegradable, and will one day return to the earth from which they came.'

ADVERTISEMENT

Work is expected to complete in 2017



Heatherwick wins job to redesign Lincoln Centre concert hall



Piano slammed over growing Paddington tower



Foster: 'UK could learn from China about civic pride'



Architect sought for £4m Govanhill Baths restoration



Open City charity announces new director

Project data

Location Bushey Hertsmere Borough Council

Type of project Cemetery, prayer halls and facility buildings

Client United Synagogue

Architect Waugh Thistleton Architects

Landscape architect J&L Gibbons

Planning consultant Dalston Warner Davis

Structural engineer Elliott Wood

M&E consultant P3R

Quantity surveyor Deacon and Jones

Main contractor Buxton Building Contractors

Tender date undisclosed

Start on site date August 2015

Completion date Feb 2017

Contract duration 19 months

Form of contract and/or procurement JCT

Total cost £6.5 million